



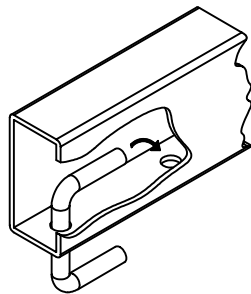
10/30/06

11566

FORD FESTIVA

GROSS LOAD CAPACITY WHEN USED AS A WEIGHT CARRYING HITCH: 1,000 LBS. TRAILER WEIGHT & 100 LBS. TONGUE WEIGHT.
*****DO NOT EXCEED VEHICLE MANUFACTURER'S RECOMMENDED TOWING CAPACITY.*****

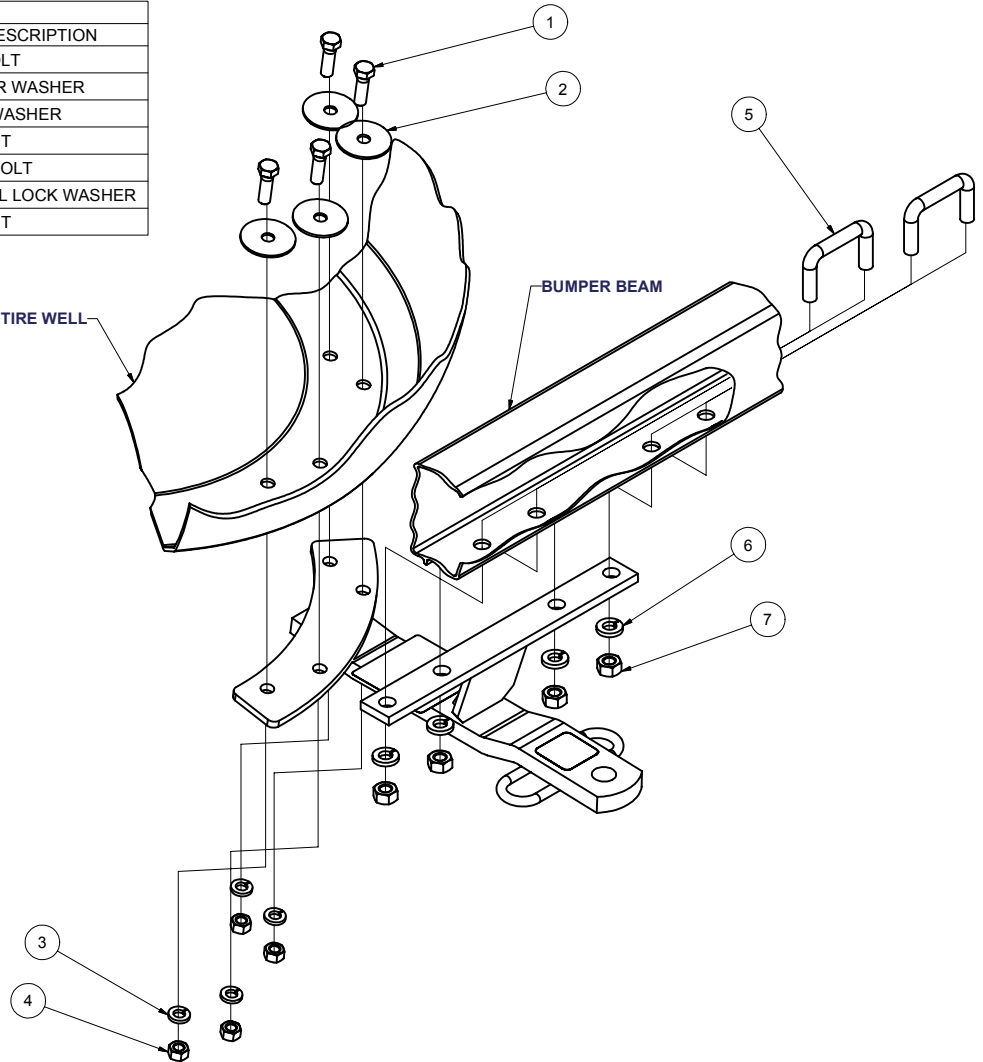
Parts List			
ITEM	QTY	PART NUMBER	DESCRIPTION
1	4	3/8 - 16 x 1 1/4	HEX BOLT
2	4	3/8"	FENDER WASHER
3	4	3/8"	LOCK WASHER
4	4	3/8 - 16	HEX NUT
5	2	7/16-14 x 1.63 x 2.50 C-C	SQ. U-BOLT
6	4	7/16	HELICAL LOCK WASHER
7	4	7/16-14	HEX NUT



U-BOLT INSTALLATION

SPARE TIRE WELL

BUMPER BEAM

HITCH WEIGHT: 9 LBS.INSTALL TIME: 45 MINUTES

INSTALL NOTES:

DRILLING REQUIRED

INSTALLATION STEPS

- 1) Remove the tire from the tire well. Loosen the bumper fascia material from the inner beam and trim enough to fit the hitch bracket to the bottom of the beam as shown. The hitch will also fit up against the bottom of the tire well.
- 2) Make sure the hitch is centered and square on the car. Check the hitch ball/bumper clearance. Using the hitch as a template, drill the bumper four places 1/2" diameter for rectangular U-bolts. Drill the tire well four places for 3/8" diameter screws.
- 3) Place the rectangular U-bolts into the bumper beam as shown.
- 4) Place the hitch over the two U-bolts in the bumper and finish fastening to the car as shown. Fender washers must be placed inside the tire well opposite the hitch.
- 5) Torque all 3/8" fasteners to 35 lb-ft, and all 7/16" fasteners to 50 lb-ft. NOTE: Do not use impact wrench on U-bolts.

PERIODICALLY CHECK THIS RECEIVER HITCH TO ENSURE THAT ALL FASTENERS ARE TIGHT AND THAT ALL STRUCTURAL COMPONENTS ARE SOUND.

Curt Manufacturing Inc., warrants this product to be free of defects in material and/or workmanship at the time of retail purchase by the original purchaser. If the product is found to be defective, Curt Manufacturing Inc., may repair or replace the product, at their option, when the product is returned, prepaid, with proof of purchase. Alteration to, misuse of, or improper installation of this product voids the warranty. Curt Manufacturing Inc.'s liability is limited to repair or replacement of products found to be defective, and specifically excludes liability for incidental or consequential loss or damage.